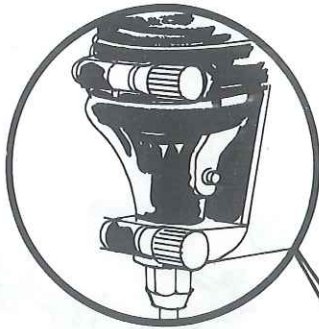


INSTRUCTIONS

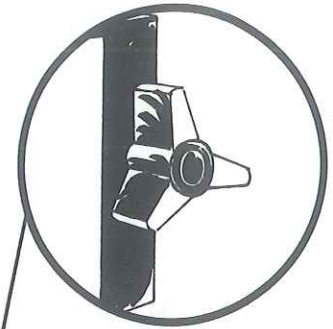
DREMEL DRILL PRESS MODEL 210

(For Use With Moto-Tool Models 245, 260, 270, 280, 370 & 380)



MOTO-TOOL CLAMP

Loosen these two knurled knobs to insert your Moto-Tool. After Moto-Tool is seated properly, retighten the knobs finger-tight. The Model 260 Moto-Tool requires the use of adaptor sleeve, accessory No. 55090, which has been included with your drill press. Before inserting the Model 260 into the drill press, slide the adaptor sleeve over front end of Moto-Tool until it snaps into place. Now insert Moto-Tool into drill press.



MOTO-TOOL HEIGHT ADJUSTMENT

This knob is used to adjust the height of the Moto-Tool to the drill press base. Simply loosen, adjust to height desired and tighten finger-tight.

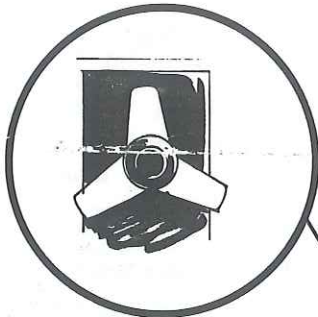


TABLE LOCK

This knob is used to lock the table in any position. Raise the table to the height desired with the knob on the right and then tighten this knob. The knob can also be used to provide tension if desired, to the lifting mechanism.

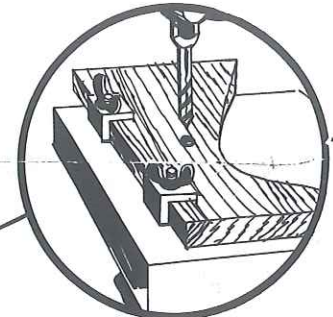


TABLE SLOTS

These four table slots can be used to set up guide fences or to insert work hold-down clamps. Insert #10 carriage bolts of desired length (not provided) with the heads under the base. Use wing nuts and washers to hold the guides or hold-down clamps as shown.

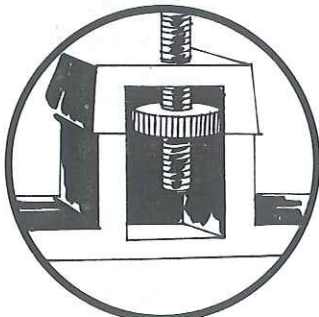


TABLE STOP

The knurled adjusting nut is the table height stop. It will determine how far the table will rise. To adjust, set the table height desired and spin the nut up the threaded rod until it stops. The table won't go beyond this point when it is raised.

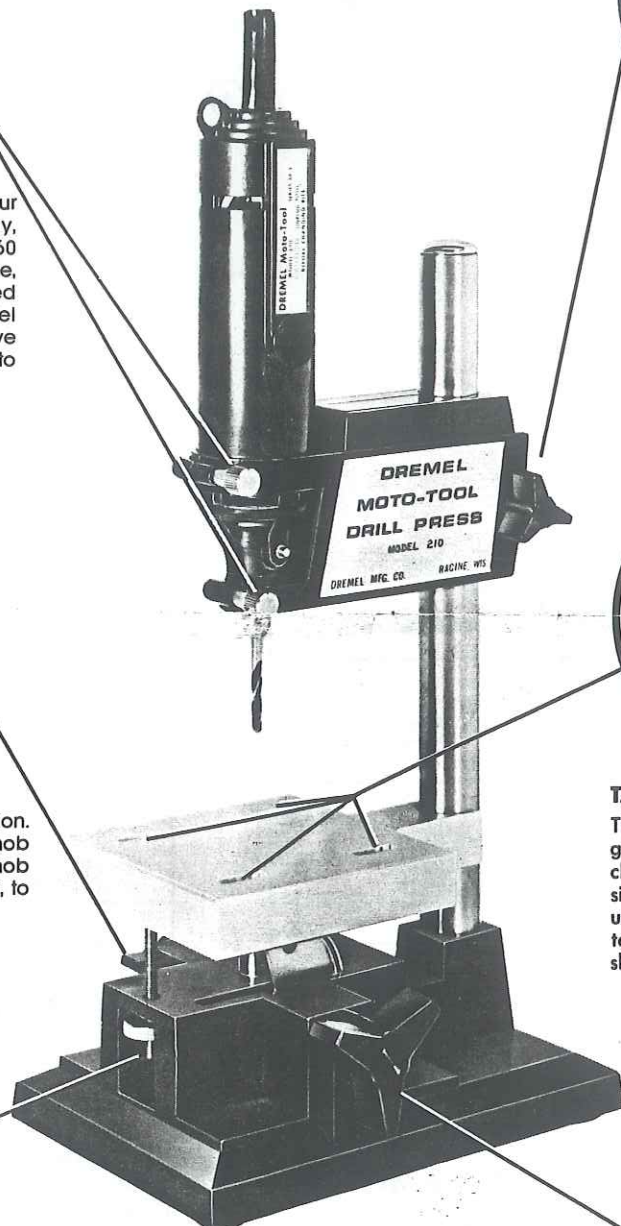


TABLE LIFTING MECHANISM

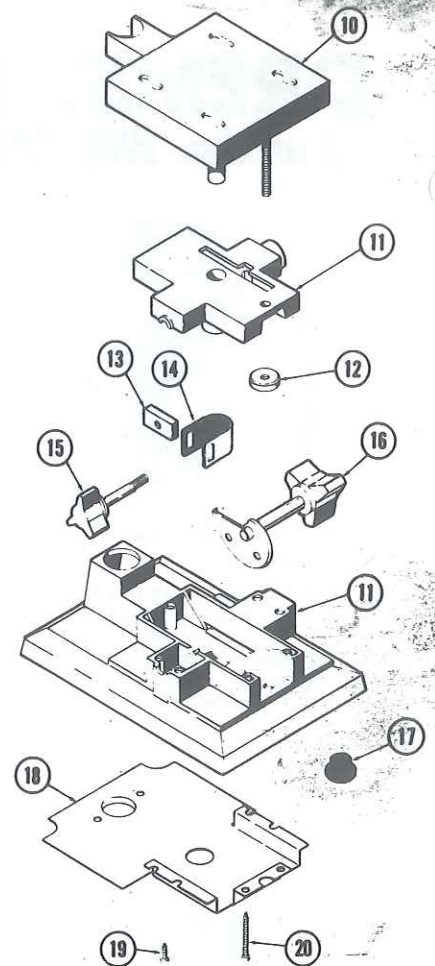
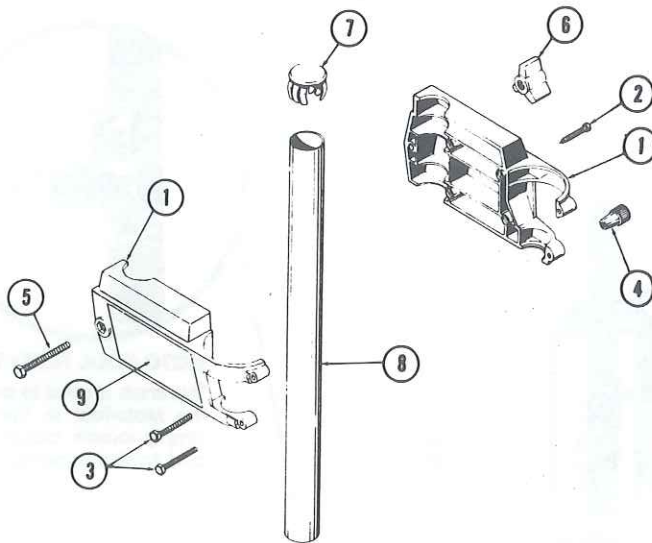
This knob is used to raise and lower the table for drilling and similar operations. Never use it to force the workpiece into the tool bit. Raise table slowly allowing the tool bit to do its work.

For parts or service write to:

DREMEL® SERVICE CENTER

Dremel Mfg. Co., Racine, Wis. 53405

DREMEL[®] MODEL 210 DRILL PRESS



Qty.	Code No.	Part No.	Description
	1	990860	Head (Set)
	2	990861	Head Screws (4)
	3	990862	Clamp Screws ^{1 Short} _{1 Long}
	4	990863	Clamp Knobs (2)
	5	600025	Post Clamp Screw
	6	600017	Post Clamp Knob
	7	600671	Post End Cap
	8	600679	Post
	9	990864	Nameplate (R & L)
	10	990472	Table Assembly

Qty.	Code No.	Part No.	Description
	11	990865	Base & Base Cover
	12	600009	Table Stop Nut
	13	600022	Table Lock Nut
	14	600019	Table Lock Strap
	15	990866	Table Lock Knob (Comp.)
	16	990475	Cam & Shaft Assembly
	17	990867	Rubber Feet (4)
	18	600041	Base Plate
	19	990868	Base Screws (2)
	20	990870	Base Screws (7)

WRITE FOR CURRENT PRICES - NO C.O.D.'S

UNITED STATES

Dremel Service Center, P.O. Box 954, Racine, WI 53405

OUTSIDE OF CONTINENTAL UNITED STATES

See your local distributor or write to Dremel Mfg. Co.
4915 Twenty-first St., Racine, Wis. 53406

EASTERN CANADA

Giles Tool Agencies, 47 Granger Ave., Scarborough, Ont.,
CANADA M1K 3L1

WESTERN CANADA

Totem Tools & Eq., Ltd., 3851 Main St., Vancouver, B.C.,
CANADA V5V-3P1

DREMEL[®] MFG. DIVISION
EMERSON ELECTRIC CO.
Form 600035 6-79

4915 21st STREET

RACINE, WISCONSIN 53406 U.S.A.

PRINTED IN U.S.A.