

CHICAGO
Electric® Power Tools

CUTOUT TOOL

Model 42831

ASSEMBLY and OPERATING INSTRUCTIONS



Distributed Exclusively by Harbor Freight Tools®.

3491 Mission Oaks Blvd., Camarillo, CA 93011
Visit our Web site at <http://www.harborfreight.com>

Copyright © 2000 by Harbor Freight Tools®. All rights reserved. No portion of this manual or any artwork contained herein may be reproduced in any shape or form without the express written consent of Harbor Freight Tools.

For technical questions and replacement parts, please call 1-800-444-3353.

Specifications

ITEM	DESCRIPTION
Motor	115V, 60 Hz, 420 watts, 3.5 amps, 28,000 RPM
Line Cord	6 feet; Plug: 2-prong polarized U.L.
Collet	Outside Nut Diameter: 5/8 inch
Depth Gauge Adjustments	1/2 (min.) to 1-5/16 (max.) inches depth
Depth Gauge Dimensions	2-3/8 inch square
Overall Dimensions	3-1/2 (D) x 11-1/2 (H) inches
Grip Dimensions	1-1/4 x 3-1/2 inches
Accessories	1/4 and 1/8 inch collets

Save This Manual

You will need the manual for the safety warnings and precautions, assembly instructions, operating and maintenance procedures, parts list and diagram. Keep your invoice with this manual. Write the invoice number on the inside of the front cover. Keep the manual and invoice in a safe and dry place for future reference.

Safety Warnings and Precautions

WARNING: When using tool, basic safety precautions should always be followed to reduce the risk of personal injury and damage to equipment.

Read all instructions before using this tool!

1. **Keep work area clean.** Cluttered areas invite injuries.
2. **Observe work area conditions.** Do not use machines or power tools in damp or wet locations. Don't expose to rain. Keep work area well lighted. Do not use electrically powered tools in the presence of flammable gases or liquids.
3. **Keep children away.** Children must never be allowed in the work area. Do not let them handle machines, tools, or extension cords.
4. **Store idle equipment.** When not in use, tools must be stored in a dry location to inhibit rust. Always lock up tools and keep out of reach of children.
5. **Do not force tool.** It will do the job better and more safely at the rate for which it was intended. Do not use inappropriate attachments in an attempt to exceed the tool capacity.
6. **Use the right tool for the job.** Do not attempt to force a small tool or attachment to do the work of a larger industrial tool. There are certain applications for which this tool was designed. Do not modify this tool and do not use this tool for a purpose for which it was not intended.

7. **Dress properly.** Do not wear loose clothing or jewelry as they can be caught in moving parts. Protective, electrically non-conductive clothes and non-skid footwear are recommended when working. Wear restrictive hair covering to contain long hair.
8. **Use eye and ear protection.** Always wear ANSI approved impact safety goggles. Wear a full face shield if you are producing metal filings or wood chips. Wear an ANSI approved dust mask or respirator when working around metal, wood, and chemical dusts and mists.
9. **Do not overreach.** Keep proper footing and balance at all times. Do not reach over or across running machines.
10. **Disconnect power.** Unplug tool when not in use.
11. **Remove adjusting keys and wrenches.** Check that keys and adjusting wrenches are removed from the tool or machine work surface before plugging it in.
12. **Avoid unintentional starting.** Be sure the switch is in the Off position when not in use and before plugging in. Do not carry any tool with your finger on the trigger, whether it is plugged in or not.
13. **Stay alert.** Watch what you are doing, use common sense. Do not operate any tool when you are tired.
14. **Take caution as some woods contain preservatives such as copper chromium arsenate (CCA) which can be toxic.** When cutting these materials extra care should be taken to avoid inhalation and minimize skin contact.
15. **Check for damaged parts.** Before using any tool, any part that appears damaged should be carefully checked to determine that it will operate properly and perform its intended function. Check for alignment and binding of moving parts; any broken parts or mounting fixtures; and any other condition that may affect proper operation. Any part that is damaged should be properly repaired or replaced by a qualified technician. Do not use the tool if any switch does not turn On and Off properly.
16. **Guard against electric shock.** Prevent body contact with grounded surfaces such as pipes, radiators, ranges, and refrigerator enclosures.
17. **Do not operate tool if under the influence of alcohol or drugs.** Read warning labels on prescriptions to determine if your judgment or reflexes are impaired while taking drugs. If there is any doubt, do not operate the tool.
18. **Use proper size and type extension cord.** If an extension cord is required, it must be of the proper size and type to supply the correct current to the tool without heating up. Otherwise, the extension cord could melt and catch fire, or cause electrical damage to the tool. This tool requires use of an extension cord of 0 to **10 amps** capability (up to 50 feet), with wire size rated at **18 AWG**. Longer extension cords require larger size wire. If you are using the tool outdoors, use an extension cord rated for outdoor use. (signified by "WA" on the jacket).
19. **WARNING: People with pacemakers should consult their physician(s) before use. Electromagnetic fields in close proximity to heart pacemaker could cause pacemaker interference or pacemaker failure.**

WARNING: Some dust created by power sanding, sawing, grinding, drilling, and other construction activities, contains chemicals known [to the State of California] to cause cancer, birth defects or other reproductive harm. Some examples of these chemicals are: Lead from lead-based paints Crystalline silica from bricks and cement or other masonry products Arsenic and chromium from chemically treated lumber Your risk from these exposures varies, depending on how often you do this type of work. To reduce your exposure to these chemicals: work in a well ventilated area, and work with approved safety equipment, such as those dust masks that are specially designed to filter out microscopic particles.(California Health & Safety Code § 25249.5, *et seq.*)

Warning: The warnings, cautions, and instructions discussed in this instruction manual cannot cover all possible conditions and situations that may occur. It must be understood by the operator that common sense and caution are factors which cannot be built into this product, but must be supplied by the operator.

Unpacking

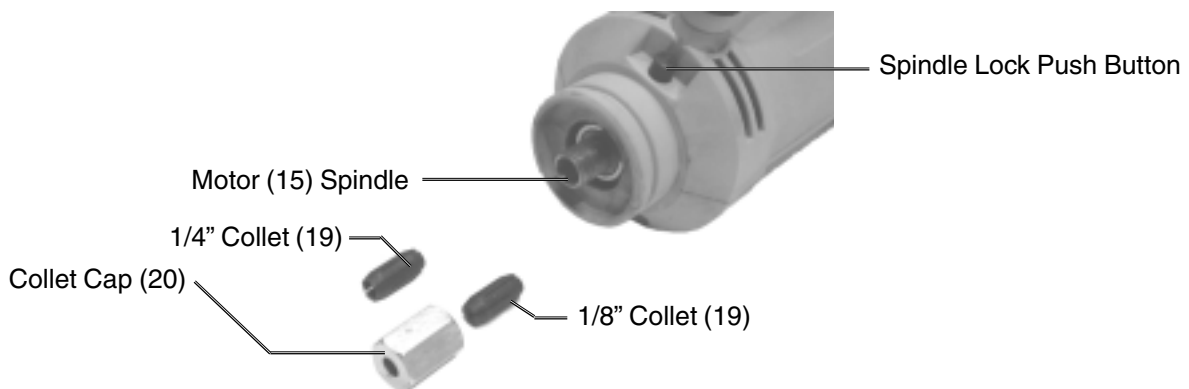
When unpacking, check to make sure the following parts are included: Cutout Tool, two Collets, and Collet Wrench . If any parts are missing or broken, please call Harbor Freight Tools at the number on the cover of this manual as soon as possible.

Operation

The Cutout Tool is used to make clean (unique shape) cuts into drywall and thin woods, etc., doing minimum tearing of the material edges. Cutting Bits for this tool are not included.

1. Loosen Stud Screw (23) enough to remove the Bracket (21) depth gauge from the Cutout Tool.
2. Using the Collet Wrench (32), loosen the Collet Cap (20) while pressing in on the Spindle Lock Push Button.
3. Insert the Cutting Bit (not supplied) into the Collet.

If the Cutting Bit does not easily fit into the 1/8 inch Collet, remove the Collet Cap and pull out the existing Collet. Replace with the 1/4 inch Collet and screw in the Collet Cap again.



4. Replace the depth gauge Bracket (21) and retighten Stud Screw (23).
5. Mark the surface of the material to be cut.
6. Adjust the depth gauge Bracket (21) by loosening Stud Screws (22), then adjusting the Bracket Head (33) in or out until the cutting bit protrudes out slightly over the thickness of the material being cut. Retighten Stud Screws.
7. Plug the Cutout Tool Line Cord (28) into an electrical outlet.
The Cutout Tool is ready to use.
8. With one hand, grasp the Handle (2). Place the other hand on the Cutout Tool body.
9. Using your thumb, press the sliding Switch (24) forward to turn ON.
10. Drill a starter hole on the cut line.
11. With the Bracket flush against the material, begin moving the Cutout Tool slowly along the cutout line.
12. When the cut is complete, slide the Switch to the Off position.

Caution: Do not set the Cutout Tool down until the Motor has stopped turning. Do not leave the tool plugged in when not in use. Do not leave the tool in the ON position when not in use.

Direction of Feed: Feed work into a blade or cutter against the direction or rotation of the blade or cutter only.

Caution: Before each use, check for damaged parts. Check for alignment of moving parts, and binding of moving parts. Always check for breakage of parts, mounting problems or any other condition that may affect a tool's operation.

.

Maintenance

1. Wipe the Cutout Tool with a clean cloth after every use.
2. Periodically blow out the Motor vent holes with compressed air to prevent the buildup of dust and particles.
3. Periodically wipe the Collets and Cutting Bits with a light oil to prevent rust.
4. Over time, if the performance of the tool diminishes, or it stops working completely, it may be necessary to replace the Motor Carbon Brush Assembly (11).

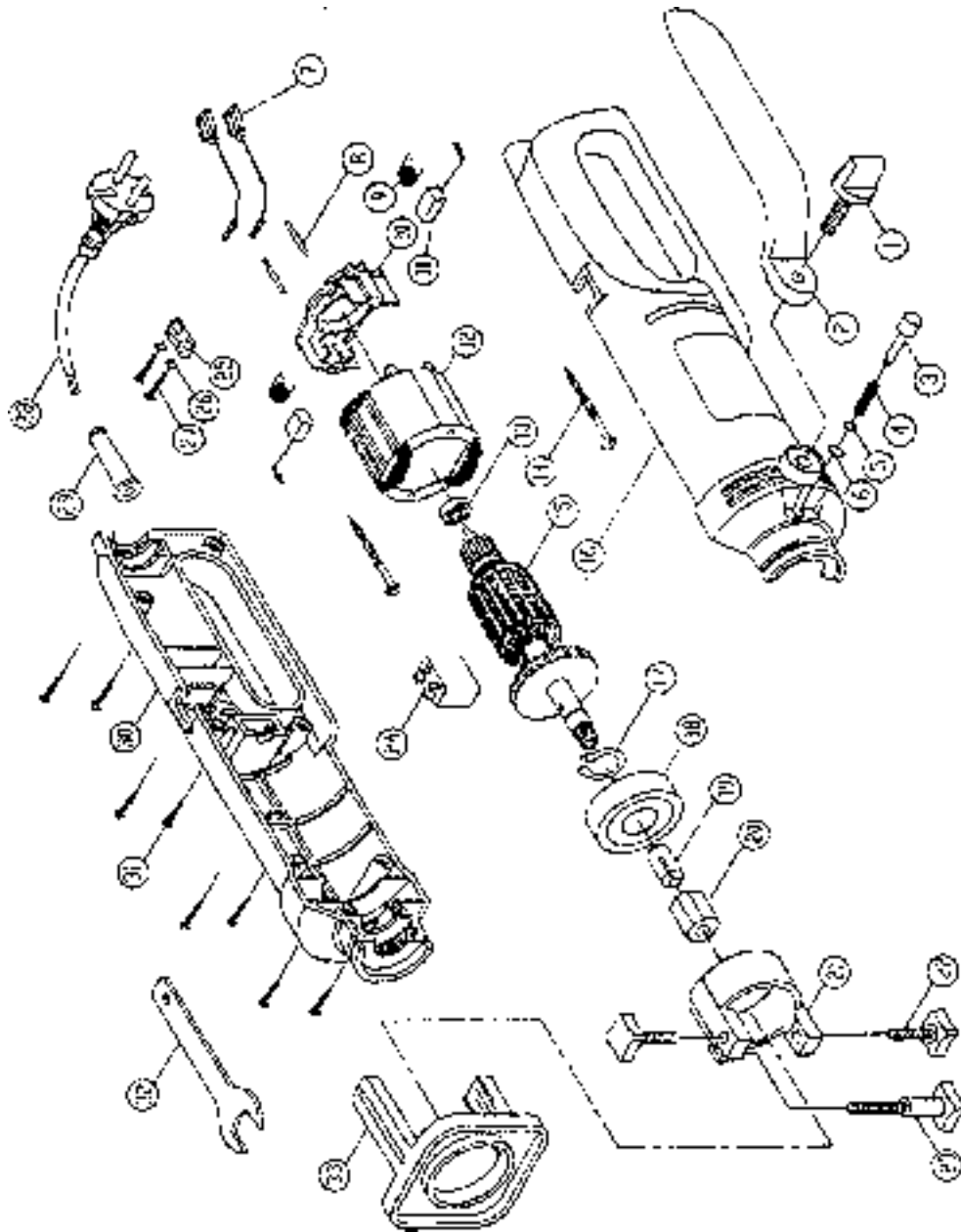
WARNING: For your safety, service and maintenance should be performed regularly by a qualified technician.

Parts List

Item #	Description	Qty
1	Screw for Handle	1
2	Handle	1
3	Pin	1
4	Spring	1
5	Plate Washer	1
6	Spring Plate	1
7	Wire Connector	2
8	Inner Connection Plate	2
9	Torque Spring	2
10	Carbon Brush Base	1
11	Carbon Brush Assembly	2
12	Stator	1
13	Ball Bearing	1
14	Stun Screw	2
15	Motor	1
16	Left Body	1
17	Spring Plate	1
18	Bearing	1
19	Collet (1/8" and 1/4")	2
20	Collet Cap	1
21	Bracket	1
22	Stud Screw (1)	2
23	Stud Screw (2)	1
24	Switch	1
25	Wire Clamp	1
26	Washer	10
27	Stud Screw	2
28	Line Cord	1
29	Cable Holder	1
30	Right Body	1
31	Stud Screw	8
32	Collet Wrench	1
33	Bracket Head	1

NOTE: Some parts are listed and shown for illustration purposes only and are not available individually as replacement parts.

Assembly Drawing



PLEASE READ THE FOLLOWING CAREFULLY

THE MANUFACTURER AND/OR DISTRIBUTOR HAS PROVIDED THE PARTS DIAGRAM IN THIS MANUAL AS A REFERENCE TOOL ONLY. NEITHER THE MANUFACTURER NOR DISTRIBUTOR MAKES ANY REPRESENTATION OR WARRANTY OF ANY KIND TO THE BUYER THAT HE OR SHE IS QUALIFIED TO MAKE ANY REPAIRS TO THE PRODUCT OR THAT HE OR SHE IS QUALIFIED TO REPLACE ANY PARTS OF THE PRODUCT. IN FACT, THE MANUFACTURER AND/OR DISTRIBUTOR EXPRESSLY STATES THAT ALL REPAIRS AND PARTS REPLACEMENTS SHOULD BE UNDERTAKEN BY CERTIFIED AND LICENSED TECHNICIANS AND NOT BY THE BUYER. THE BUYER ASSUMES ALL RISK AND LIABILITY ARISING OUT OF HIS OR HER REPAIRS TO THE ORIGINAL PRODUCT OR REPLACEMENT PARTS THERETO, OR ARISING OUT OF HIS OR HER INSTALLATION OF REPLACEMENT PARTS THERETO.

LIMITED 90 DAY WARRANTY

Harbor Freight Tools Co. makes every effort to assure that its products meet high quality and durability standards, and warrants to the original purchaser that this product is free from defects in materials and workmanship for the period of 90 days from the date of purchase. This warranty does not apply to damage due directly or indirectly, to misuse, abuse, negligence or accidents, repairs or alterations outside our facilities, criminal activity, improper installation, normal wear and tear, or to lack of maintenance. We shall in no event be liable for death, injuries to persons or property, or for incidental, contingent, special or consequential damages arising from the use of our product. Some states do not allow the exclusion or limitation of incidental or consequential damages, so the above limitation of exclusion may not apply to you. THIS WARRANTY IS EXPRESSLY IN LIEU OF ALL OTHER WARRANTIES, EXPRESS OR IMPLIED, INCLUDING THE WARRANTIES OF MERCHANTABILITY AND FITNESS.

To take advantage of this warranty, the product or part must be returned to us with transportation charges prepaid. Proof of purchase date and an explanation of the complaint must accompany the merchandise. If our inspection verifies the defect, we will either repair or replace the product at our election or we may elect to refund the purchase price if we cannot readily and quickly provide you with a replacement. We will return repaired products at our expense, but if we determine there is no defect, or that the defect resulted from causes not within the scope of our warranty, then you must bear the cost of returning the product.

This warranty gives you specific legal rights and you may also have other rights which vary from state to state.

3491 Mission Oaks Blvd. • PO Box 6009 • Camarillo, CA 93011 • (800) 444-3353